



**P.**  
Patmark

# Patmark®-Series



**Patmark mini**

Markingfield: 15x15 mm



**Patmark**

Markingfield: 33x15 mm



**Patmark plus**

Markingfield: 80x20 mm

**We mark everything!**

Metals up to 62 HRC - Plastics - Wood products  
Texts - Logos - DataMatrix - QR Code - Shapes -  
Serial numbers - calendar marking

# Patmark<sup>®</sup>-mini

**Are you still using  
a hammer?**

Patmark-mini is called  
“Digital Punch”  
in another word.

The most innovated of marking  
tool delivers you safe with  
hammer-free experience  
needless of exhausting.

Programming via an app or  
Windows software enables  
new dimensions in  
marking technology.

With its 2.3 kg\* you can mark  
almost any location without tiring!

\*(incl. Battery)

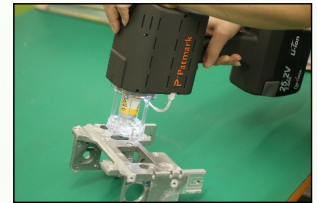


**Replace your heat numbers with our inexpensive  
Patmark mini and benefit from its advantages!**

**No more risk of injury  
from the hammer!**

**Fast programming!**

**Special characters  
simply marked!**



Works in all directions



# Patmark®

## Mobile dot pin marker

**flexible**

**fast**

**simply**

Like the Patmark mini, the larger model is flexible and easy to use.

With our cost-effective Patmark, even longer markings can be applied to your component easily and quickly.

The 2.9 kg\* of the Patmark are light and safe in your hand!

\*(incl. Battery)

**WE HAVE POWER**

**The 25.2 V battery allows hours of marking !**



Markingfield 33 x 15 mm



Illuminated Markingfield

all PM Models



Patmark on the tool balancer

all PM Models

# Patmark<sup>®</sup>-plus

**THE BIG ONE**

**Large markingfield  
Efficient &  
cost-efficient  
marking solution**

The Patmark plus is just as flexible and easy to use as the smaller models.

It has an extra large marking field for longer markings!

**Up to 27 characters**  
in font size 4 mm

In smaller font size also more characters!

*Unique quality*



Can also be used without battery!

all PM Models

# Patmark® Programming

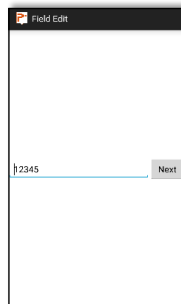
## Android / iOS App

Simply download the Patmark App from the App Store & connect your device to the Patmark via WIFI.

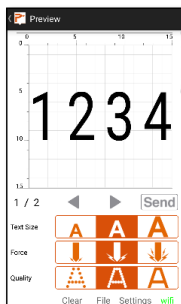
Open the Patmark App and start typing.  
Set the marking parameters in 3 easy steps!



### 1. enter text



### 2. set parameters



### 3. mark!

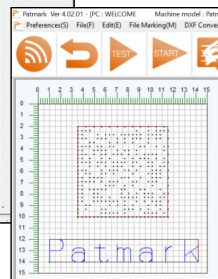
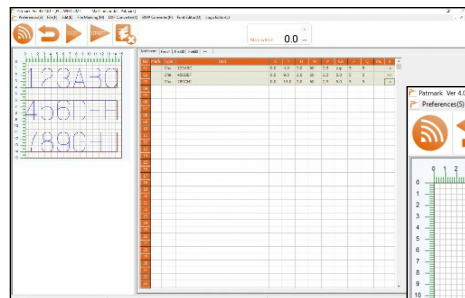
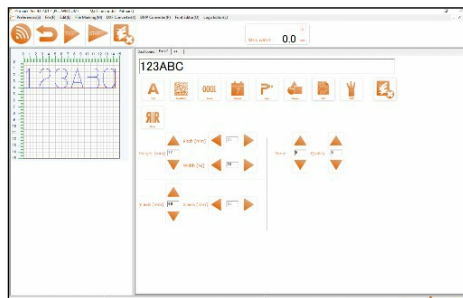


## Windows Software

The Patmark Windows software can also be used with WIFI or a USB connection! The software offers you many more features like multiple line marking, logos, QR and DM codes, serial numbers or calendar markings.

By using the PM Windows software you can also expand the memory capacity. (255 files)

To further simplify data entry, the PM WIN software offers a barcode scan function and a CSV function. The data can be transferred to the Patmark by barcode scan or by reading a CSV file.



# Patmark® Prices

## Patmark-mini

### Patmark mini battery set

incl. AC adapter, battery and battery charging station in the case

Markingfield field 15 x 15 mm

Including App and Windows Software



## Patmark

### Patmark Battery-Set

incl. AC adapter, battery and battery charging station in the case

Markingfield 33 x 15 mm

Including App and Windows Software



Without transport case minus 340,00 €

## Patmark-plus

### Patmark plus Battery-Set

incl. AC adapter, battery and battery charging station in the case

Markingfield 80 x 20 mm

Including App and Windows Software



Without transport case minus 400,00 €

## Spare battery

for all Models

25.2V, 2.0Ah

**450,00 €**

## Spare pin

for all Models

Standard HRA 92 (120°/90°/60°/40°)

**120,00 €**

HG HRA 93,6 (120°/90°/60°/40°)

**185,00 €**



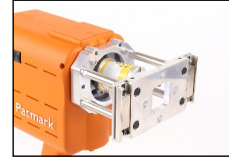
# Patmark Accessories

## Patmark-mini

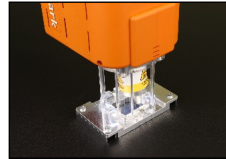
### Metal marking legs

4 marking legs for individual use !

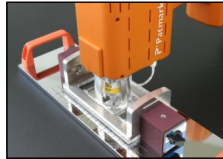
Marking legs also compatible with the magnetic accessories!



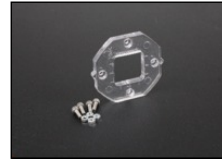
### Magnetic guide



### String text Fixture set



### Standard Plastic guide



### V-guide for marking cylindrical components

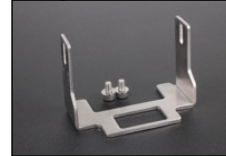


### Fixing aid for cylindrical components

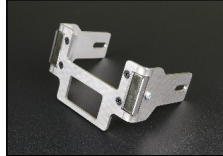


## Patmark

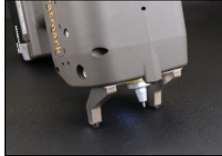
### Standard Metal guide



### Magnetic guide



### Marking aid 2



### Case for Patmark



### V-Guide for marking cylindrical components

COMING SOON

## Patmark- plus

### Magnetic guide



### V-Guide

for marking cylindrical components

COMING SOON



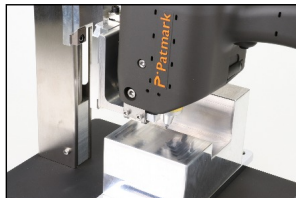
# Patmark® Accessories

## Height-adjustable Column

Patmark-mini  
Patmark  
Patmark-plus

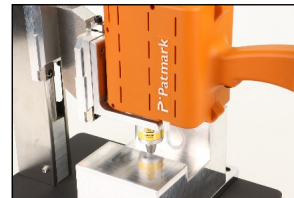
Column incl. adapter  
for PM mini or PM

Coming soon for Patmark plus



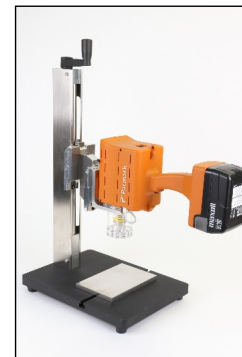
Height-adjustable column for  
stationary use of the Patmark series

For marking smallest components!



Can be used with and  
without marking guide.

Problem-free marking in a recess!



**\*SPECIAL\***

## Unique accessories Rotary-S

### Rotary-S

(column is required)



Our manual rotary axis Rotary-S enables a  
circumferential marking of your cylindrical  
components very easily and economically!

An integrated pause function and the manual  
rotation of the component allows a high quality  
marking on the circumference. Without  
automatic rotary axis!



The Rotary-S is best suited for small series of  
cylindrical components.



# Patmark® -Series

## Examples of use

Patmark-mini  
Patmark  
Patmark-plus



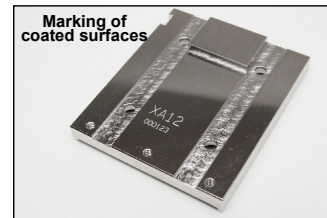
Marking of painted surfaces



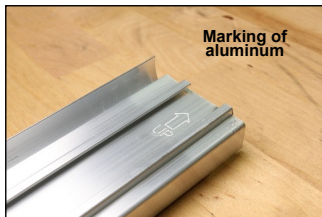
Marking of hardened surfaces  
Up to 62HRC



Marking of coated surfaces



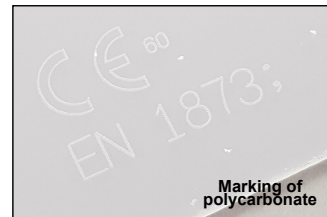
Marking of aluminum



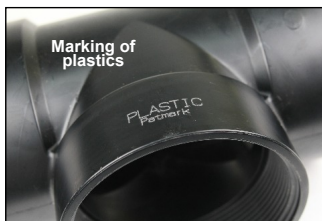
Marking of ceramics



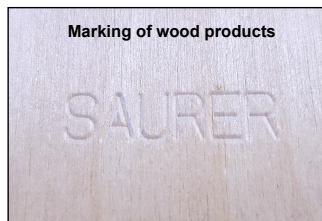
Marking of polycarbonate



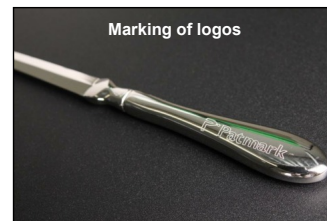
Marking of plastics



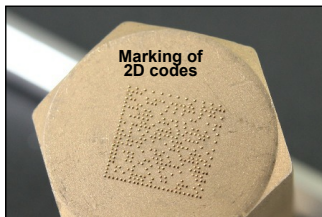
Marking of wood products



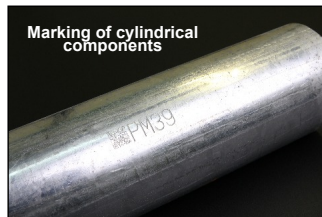
Marking of logos



Marking of 2D codes



Marking of cylindrical components



Marking of various geometries

